



Our Beef is...

100 % grass-fed. No grain

All natural. No hormones or antibiotics.

Certified by A Greener world as 100% Grass-fed and Animal Welfare Approved.

That's Life on the Farm

There is a fun game that my parents bought years back called Life on the Farm. It is basically the game of Life, but with a cattle ranching theme. It is a great game that every family should have and play. However, it is a little scary how close to real life on the farm this game mimics. Ranching is full of ups and downs.

The cows were out on the road...move back three spaces. The rains have been timely and plentiful this year and there is plenty of grass...move forward two spaces. The hay baler breaks down as we are trying to bale hay in 98 degree weather before the predicted rain in 12 hours...lose \$1000. Hay yields are up 20% this year...receive \$2000. Lose calf to predators...Find a cow that was missing for 6 weeks. You get the point.



One thing I have learned over the years is that life on the farm is hard and we can never do this alone. I am always amazed (and grateful) at how many people are willing to help us when we need the help. Having good family, friends, and neighbors to help when needed is essential to being successful on the farm.

For example, last week we were in need of some help putting up small hay bales in the barn. The heat index was 110+, and I did not think we could find anyone to help with this tough job. After a few calls, my two sons and two neighbor boys showed up immediately to help us, not expecting anything in return.



Another example...we were recently hauling some cattle early one morning, and in the middle of the highway our truck overheated rapidly. We had to pull over and could not go on. I had no idea what to do with a load of stressed cattle in the middle of the highway. I called a neighbor rancher to ask if I could borrow a truck. Without hesitation he said he would find someone to take his kids to school and would be there as soon as possible. Within 15 minutes he arrived, hooked up our trailer to his truck and drove our cattle to the destination and helped me unload them. As you can imagine, I was extremely grateful. He would not take any offer for compensation and just said..."That is life on the farm...I am sure I will be in need of help someday too." Its been a hard lesson to learn, but I have come to realize that we all need help sometimes. So, I will just accept it, say thank you, and look for ways to pay it forward.



Beef Updates:

BULK BEEF

Whole, half, or quarter beef

- We are currently sold out of our pre-sales for 2024. We will put those still interested on a waiting list.
- The way it works is: 1) You tell us you want a quarter, half, or a whole. 2) We will follow up with you with additional details. 3) You can confirm your interest and send a deposit (\$100) to reserve your beef
- Please contact us with any questions.

RETAIL BEEF

Cuts directly from MJ Ranch

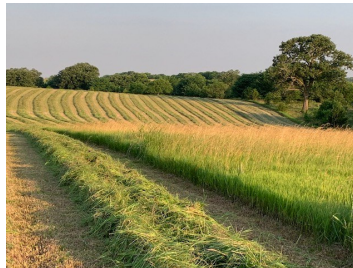
- We have a very limited quantity of retail beef, primarily ground beef, available on the farm. Contact Joyce at mj ranch66044@gmail.com or 785-865-2503 if you are interested. Please leave a message if we do not answer.



What's New on the Ranch

We are in the middle of hay season, which gets a little crazy at times. You have to rely on the weather forecast (which is right about 10% of the time in my experience). Generally, you need two consecutive days of hot dry weather to cut, rake, and bale a field. With all the rain (which we are thankful for), it has been difficult to work in all the hay; however, after 6 weeks of hay work, we have all ready exceeded our hay needs for 2024. We need about 400, 1000-1200 lb bales to get through a winter, and we all ready have 420 bales with one more field to go.

The fall calves continue to rotate in the finishing pasture and are looking great this year. Hopefully our fall customers will be pleased with the results! We will be contacting the fall customers in August/September with your specific haul dates.



Our beef is all 2-year old, 100% grass-fed Angus beef, that has **never** been fed grain, always been kept on pasture, never in a feedlot, no growth hormones or antibiotics, and always been given humane care....as certified by A Greener World. We have 2 certifications: Animal Welfare Approved (humane care) & Certified Grass-fed (fed only grass/hay)!



Connect with us!

Primary Business Address	Mailing Address
3105 Wild Horse Road Lawrence, KS 66044	3380 Wild Horse Road Lawrence, KS 66044

Phone: 785-766-6043 (Mark)
 Phone: : 785-865-2503 (Mel and Joyce)
 Email: markwilliams6043@gmail.com
 Email: mj ranch66044@gmail.com

We're on the web at www.mandranch.com

And on Facebook and Instagram @MJRanchLLC